



---

REVISION HISTORY

DEVICE ORDER INFORMATION


ABSOLUTE MAXIMUM RATINGS

Over operating free-air temperature unless otherwise

---

RECOMMENDED OPERATING CONDITIONS


ESD RATINGS


(1)  
(2)

THERMAL INFORMATION


---

## ELECTRICAL CHARACTERISTICS

---

---

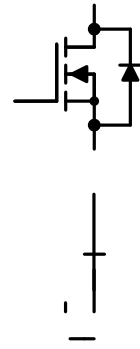
FUNCTIONAL BLOCK DIAGRAM

EN

FB

Oscillator

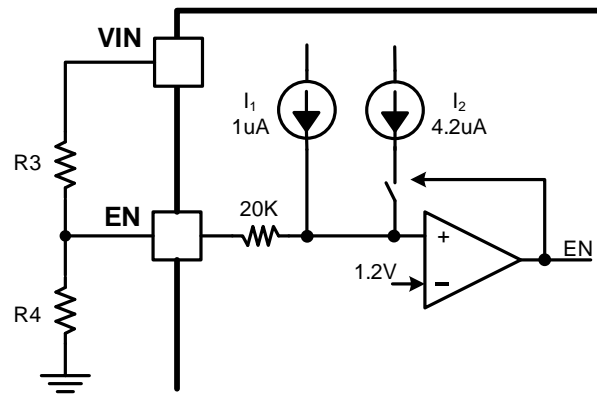
PWM and Dead Time Control Logic



---

---

---





---

---

---

---

---

---



---

(6)

(7)

(8)

(9)

---

(10)

---

---

(12)




---

Figure 12. Power Up, IOU=3A

Figure 13. Power Down, IOU=3A

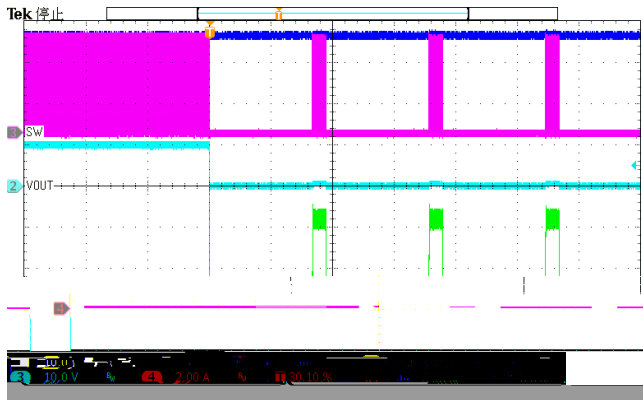


Figure 18. Over Current Protection(0A to hard short)

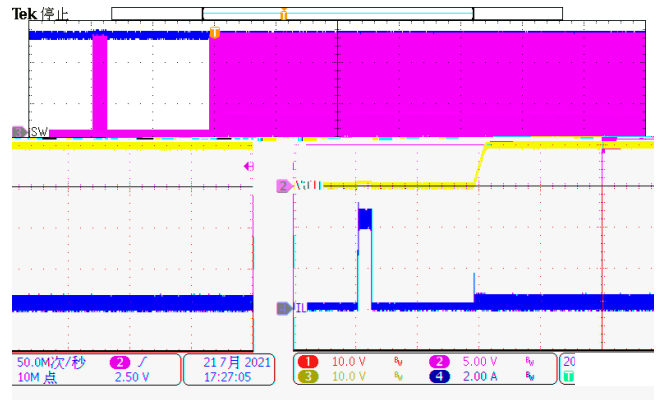


Figure 19. Over Current Release (hard short to 0A)

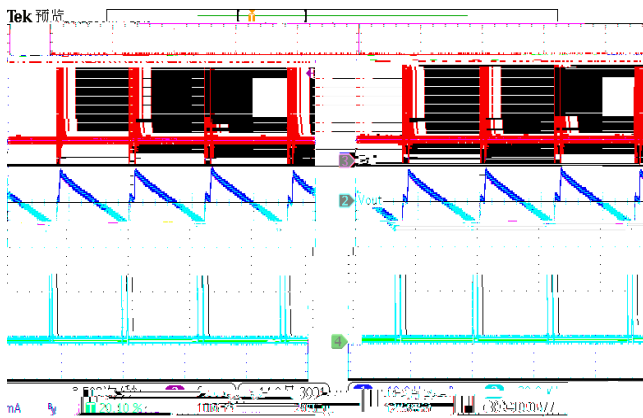


Figure 20. Output Ripple (Iload=10mA)

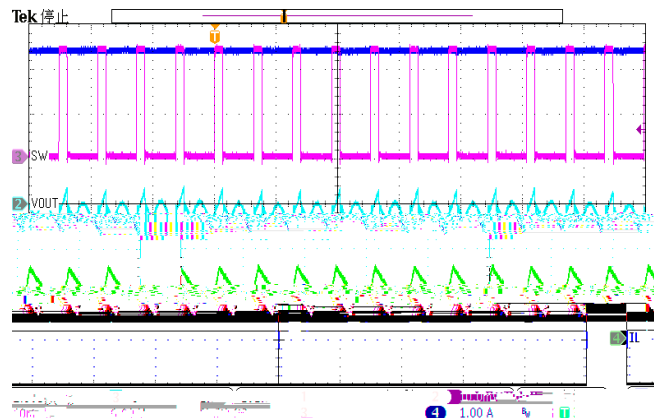


Figure 21. Output Ripple (Iload=1A)

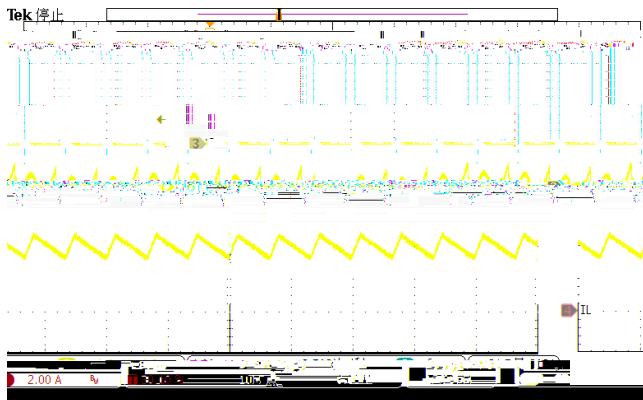


Figure 22. Output Ripple (Iload=3A)

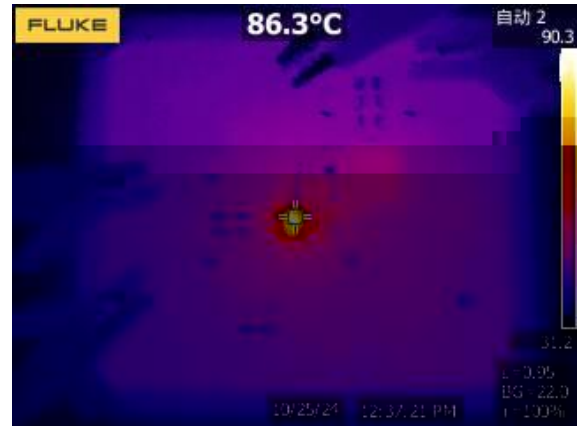


Figure 23. Thermal, 12VIN, 5Vout, 3A

---

1.

2.

3.

4.

---

# TAPE AND REEL INFORMATION

